



The Lumberjack® is a high speed (up to 50 000 rpm), low torque multi-purpose cutter.

LUMBERJACK® Cutters

The Lumberjack® is a high speed (up to 50 000 rpm), low torque multi purpose cutter. The rotation of the Lumberjack™ is powered by the water pressure supplied by a common sewer cleaning jetter truck.

Although it is designed to cut roots, many of our customers use it for cutting concrete, grease, mineral and chemical deposits, tuberculate and protruding laterals. We know of no other cutter that is as versatile, reliable and user friendly for common, everyday cutting jobs. The Lumberjack® series operates in pipe sizes from 3" up to 48".

The bearings are sealed, grease lubricated and water cooled. No lubrication is required after use. It works and works with very little maintenance or care required. The standard and optional cutting accessories are designed to eliminate potential pipe damage.

The low torque high-speed feature and benefit prevents getting stuck, spinning off the hose or cutting through the host pipe.

General

The Lumberjack® cutters are available in different models for optimal cleaning effect. The cutters remove roots and other common obstructions in sanitary and storm sewer pipe in accordance with the following model number.

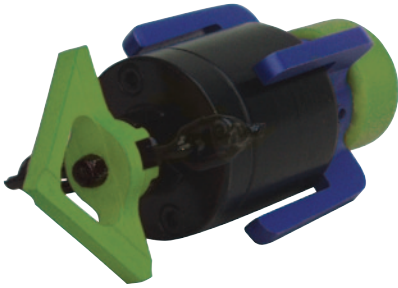
MODEL	WEIGHT (standard incl. front knife and impelling nozzle, no sled)		LENGTH (standard incl. front knife and impelling nozzle, no sled)		PIPE SIZES	
LJ700C	45 kg +	98 lbs +	1100 mm	43"	400 to 700 mm (optional to 1200 mm)	16" to 24" (optional to 48")
LJ300C	20 kg	47 lbs	610 mm	24"	200 to 300 mm (optional to 525 mm)	8",10",12" (optional to 24")
LJ200C	11 kg	25 lbs	390 mm	15"	150 to 250 mm (optional to 300 mm)	6",8",10" (optional 12")
LJ100C	6 kg	13 lbs	315 mm	12"	100 to 150 mm (optional to 225 mm)	4",6" (optional 8" or 9")
LJ075C	4 kg	9 lbs	240 mm	9.5"	100 and 150 mm (optional 200 and 225 mm)	4",6" (optional 8"and 9")
LJ050C	1.0 kg	2 lbs	120 mm	4.8"	75 and 100 mm (optional 125 and 150 mm)	3",4" (optional 5" & 6")

Note: Weights and dimensions are approximate and subject to change without notice. Weights and dimensions may vary depending on equipment installed. Certain equipment not available on all models.

The Lumberjack® cutters rotate at min of 10,000 RPM with flow rates from 10 up to 250 US Gallons per minute at variable pressures. Each model clean the inside perimeter of the sewer pipe utilizing a filled chain link. The Lumberjack® cutters also have the feature of a removable cutting blade for severe blockages. All models are supplied with propelling jet housing and some with tow ring.

Provision

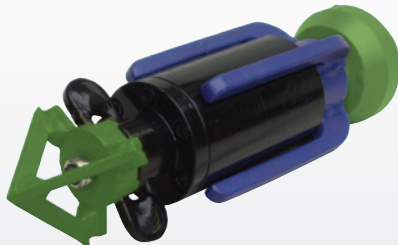
The Lumberjack® cutter kit is supplied with the turbine, water supply tube, chain plate/pull plate, tow ring, cutting blade, sleds, five sets of chain per sled size, propelling nozzle with jets and adapter, spanner wrench, hand tools and tool box.



LJ 050C	
Sled sizes	3", 4" (optional 5" and 6")
Connecting thread	½" BSP or ½" NPT
Minimum flowrate	10 US GPM
Minimum pressure	1200 to 1500 PSI
Bursting pressure	10,000 PSI



LJ 075C	
Sled sizes	4", 6" (optional 8" and 9")
Connecting thread	½" female BSP or ½" female NPT
Minimum flowrate	15 US GPM
Minimum pressure	1200 to 1500 PSI
Bursting pressure	10,000 PSI



LJ 100C	
Sled sizes	4", 6" (optional 8" and 9")
Connecting thread	¾", 1" or 1¼" female BSP or ¾", 1" or 1¼" female NPT
Minimum flowrate	35 US GPM
Minimum pressure	1200 to 1500 PSI
Bursting pressure	10,000 PSI



LJ 200C	
Sled sizes	6" to 10" (optional 12")
Connecting thread	¾", 1" or 1¼" female BSP or ¾", 1" or 1¼" female NPT
Minimum flowrate	40 US GPM
Minimum pressure	1200 to 1500 PSI
Bursting pressure	6,000 PSI



LJ 300C	
Sled sizes	8", 9", 10", 12", 15", 16", 18", 20", 21" & 24" (Custom Options up to 30")
Connecting thread	¾", 1" or 1¼" female BSP or ¾", 1" or 1¼" female NPT
Minimum flowrate	50 US GPM
Minimum pressure	1500 to 1800 PSI
Bursting pressure	10,000 PSI



LJ 700C	
Sled sizes	15" to 24" (optional to 48")
Connecting thread	1¼" female BSP or 1", 1¼ or 1 1/2" female NPT
Minimum flowrate	80 - 100 US GPM
Minimum pressure	1500 to 1800 PSI
Bursting pressure	6,000 PSI

Maintenance

The Lumberjack® cutters do not require lubrication after use. All Lumberjack should be serviced every 8-18 Months depending upon use.

Warranty

The cutter shall be free of defects due to material and workmanship and shall be covered under a one-year replacement guarantee of the bearings.